

Photo: Mansfield Flight



FROM RIDGE TO THE MAD RIVER

Corrie Miller, Friends of the Mad River Executive Director

Richard Czaplinski, Friends of the Mad River Board, Ridge to River Taskforce

Margo Wade, Sugarbush Resort, Ridge to River Taskforce

Friends of the Mad River



www.FriendsOfTheMadRiver.org

Friends of the Mad River (FMR) is committed to **informed and active stewardship** of the Mad River and its 144 square mile watershed.

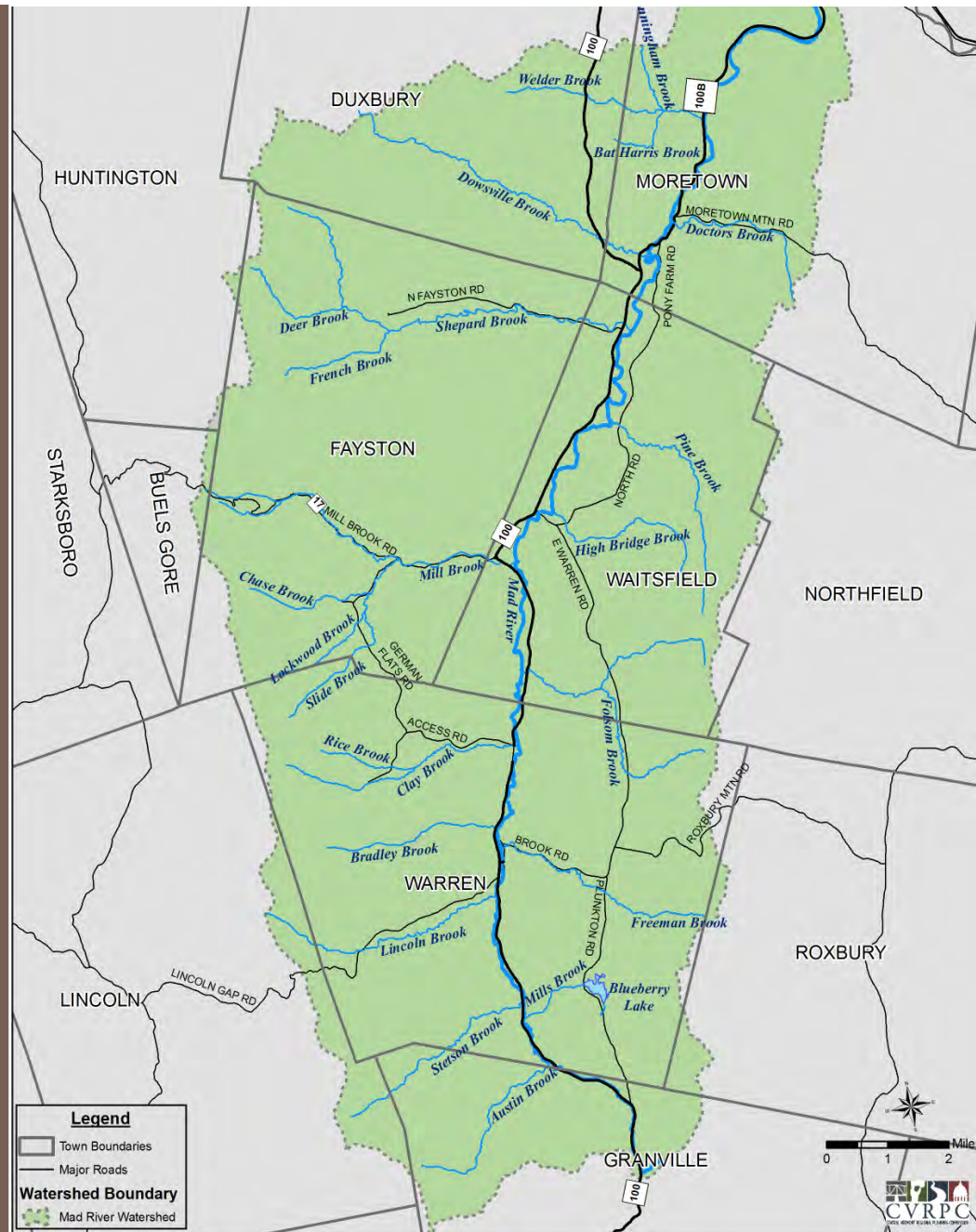
Friends of the Mad River works with the MRV community to:

- monitor ecological conditions and conduct relevant research;
- foster appreciation and understanding of our valued watershed resources;
- help communities find solutions to problems that threaten them;
- and implement projects that conserve or restore the watershed's resources.

The Mad River Watershed

The river connects our community.

Its clean water is a measure of our success as stewards of the land.



REMEMBER...



Photo: David Garten



Photo: EmberPhoto

REMEMBER...

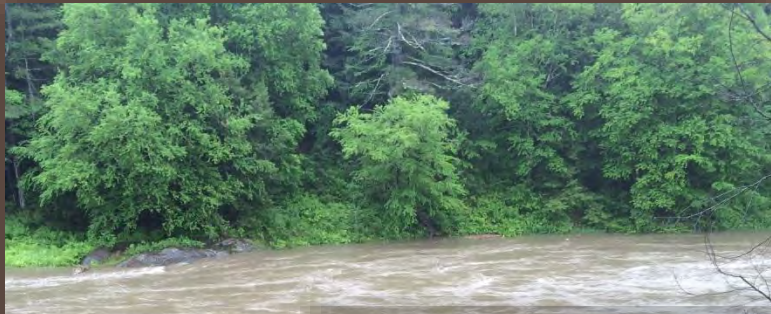


Photo: Burlington Free Press



Photo: David Garten

We've Come So Far, Yet...



Photos, in order:
Corrie Miller, Mike Ware,
FMR, Kim Greenwood

CONSIDER...

- ***What if*** we carried forward that same sense of camaraderie following Tropical Storm Irene to strengthen our watershed community so that it is less vulnerable in the future?
- ***What if*** we worked with our neighbors to develop innovative solutions?



2015 Leahy Center Environmental Summit



Photo: Leahy Staff

An Opportunity for Resilience

If we *slow down* rainwater and snowmelt and help it *sink into the ground* ...

- we are less vulnerable in larger floods
- we reduce infrastructure maintenance costs
- we benefit from cleaner water

→ Multiple Benefits!

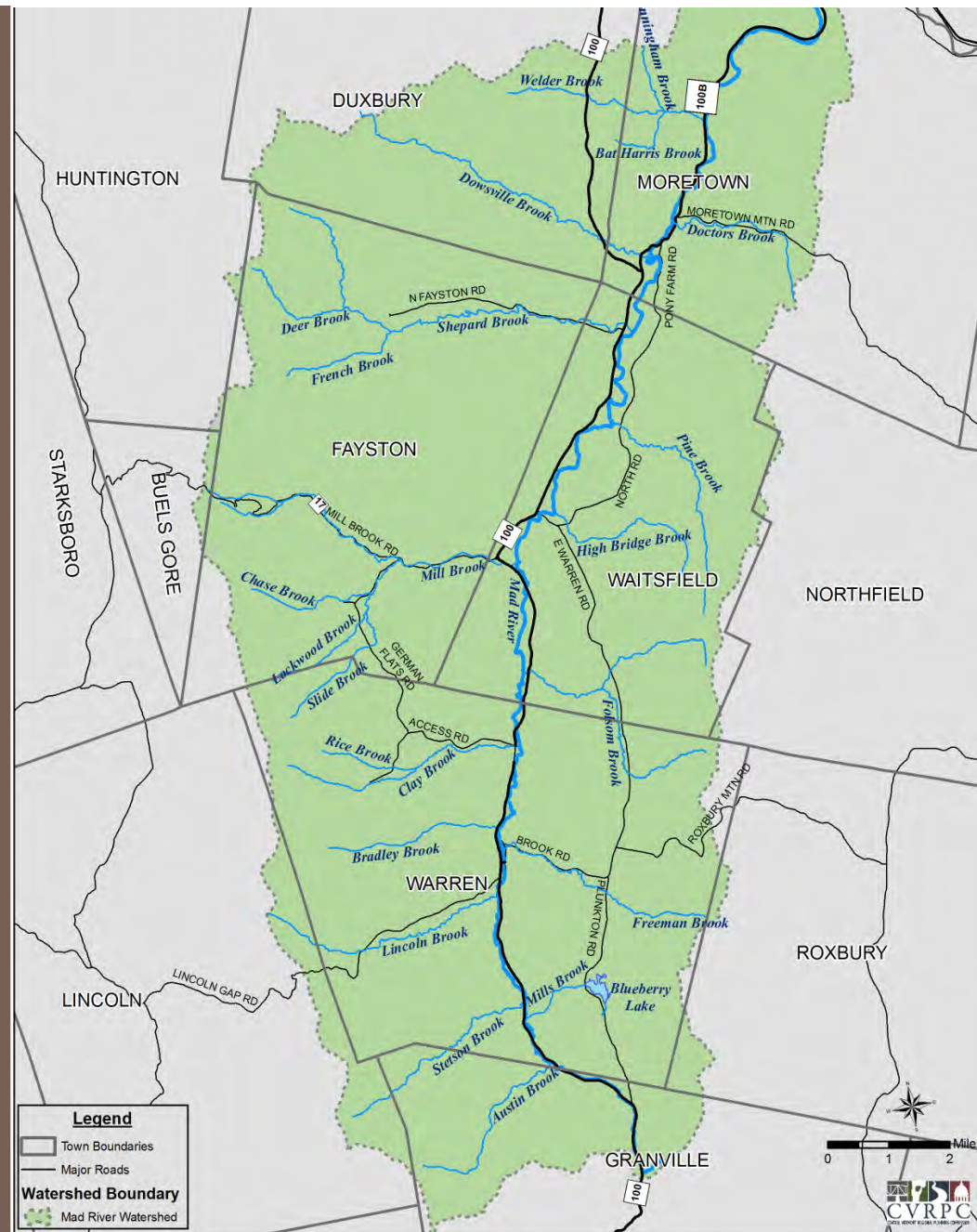


A Watershed –Wide Problem

The river & watershed connect our community.

Upstream & Downstream

Mountain & Valley



5 Watershed Towns – Support & Involvement



HIGH MEADOWS
FUND



Photo Above:
Joshua Schwartz

Photo Below:
Corrie Miller

R2R Community Taskforce



Official Town Representatives

Duxbury: John Murphy (SB)
Alan Quackenbush (PC)

Fayston: Jared Cadwell (SB)
Carol Chamberlin (PC)

Moretown: John Hoogenboom (SB)
Dara Torre (PC)

Waitsfield: Sal Spinosa (SB)
Brian Voigt (PC)

Warren: Bob Ackland (SB)
Mike Bridgewater (PC)

Businesses and Citizens:

Zeke Church,
Sugarbush Property Group, Inc.

Richard Czaplinski, FMR

Kinny Perot, FMR

Barry Simpson, Warren Public Works

Margo Wade, Sugarbush Resort

Supporting Organizations:

Friends of the Mad River (FMR)

Mad River Valley Planning District

Central Vermont Regional Planning Commission

Taskforce...

The Community Taskforce is working to strengthen the MRV's resilience and water quality with improved stormwater management.

- Learning
- Educating



MRV Land Uses that Increase Stormwater Runoff Volume & Velocity



MRV Land Uses that Increase Stormwater Runoff Volume & Velocity

- Public Roads





MRV Land Uses that Increase Stormwater Runoff Volume & Velocity

- Public Roads
- Private Roads & Driveways

**MRV has private road length equal to half as much as public roads!





MRV Land Uses that Increase Stormwater Runoff Volume & Velocity

- Public Roads
- Private Roads & Driveways
- Residential Development





Bing maps/Pictometry

MRV Land Uses that Increase Stormwater Runoff Volume & Velocity

- Public Roads
- Private Roads & Driveways
- Residential Development
- Forestry





MRV Land Uses that Increase Stormwater Runoff Volume & Velocity

- Public Roads
- Private Roads & Driveways
- Residential Development
- Forestry
- Agriculture





MRV Land Uses that Increase Stormwater Runoff Volume & Velocity

- Public Roads
- Private Roads & Driveways
- Residential Development
- Forestry
- Agriculture
- Village Development

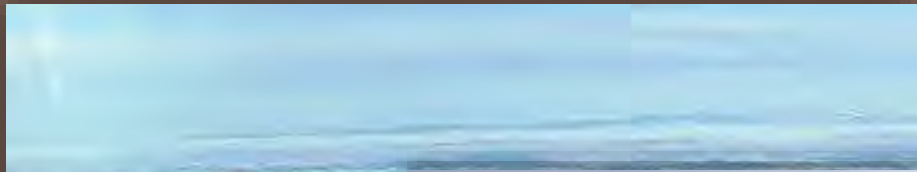




MRV Land Uses that Increase Stormwater Runoff Volume & Velocity

- Public Roads
- Private Roads & Driveways
- Residential Development
- Forestry
- Agriculture
- Village Development
- Resort Development

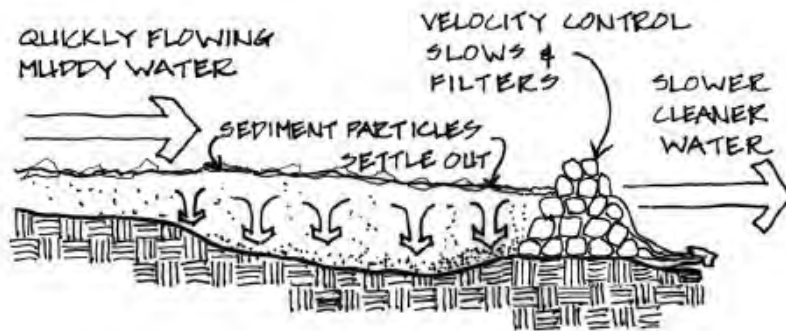




What Can We Do to Strengthen our Community's Resilience and Keep our Water Clean?



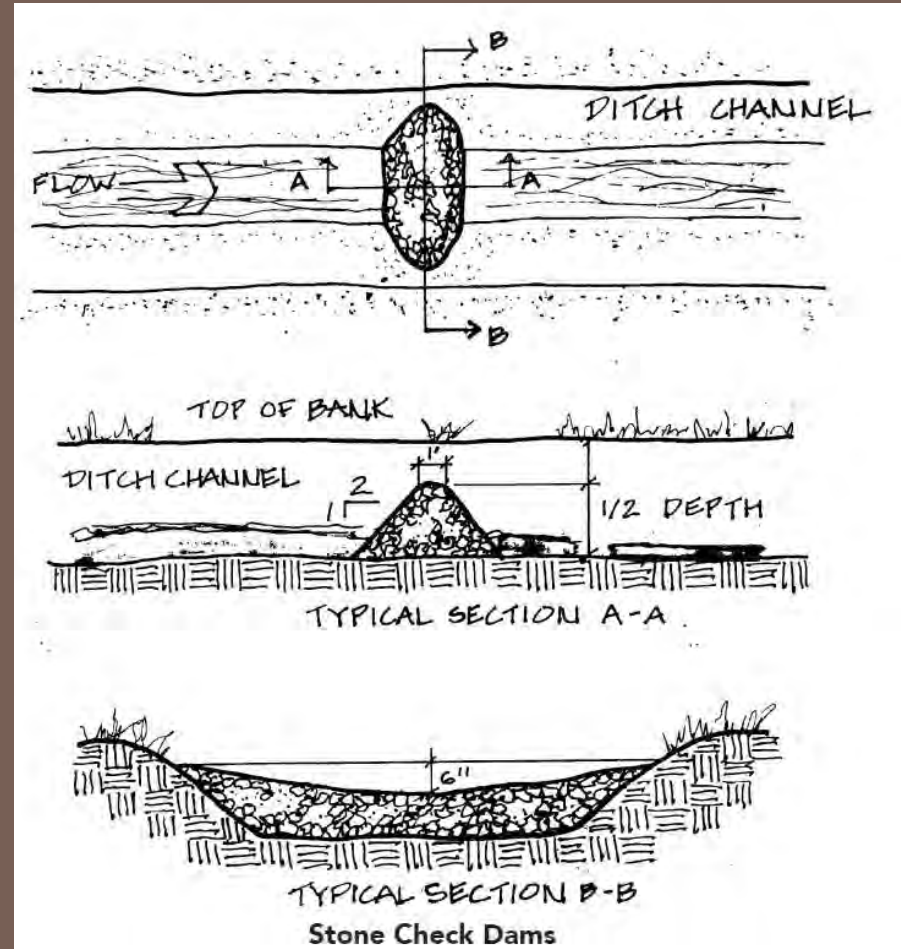
Stone Check Dams



Velocity Control

Stone Check Dams: constructed of stone large enough to handle the expected velocity of water.

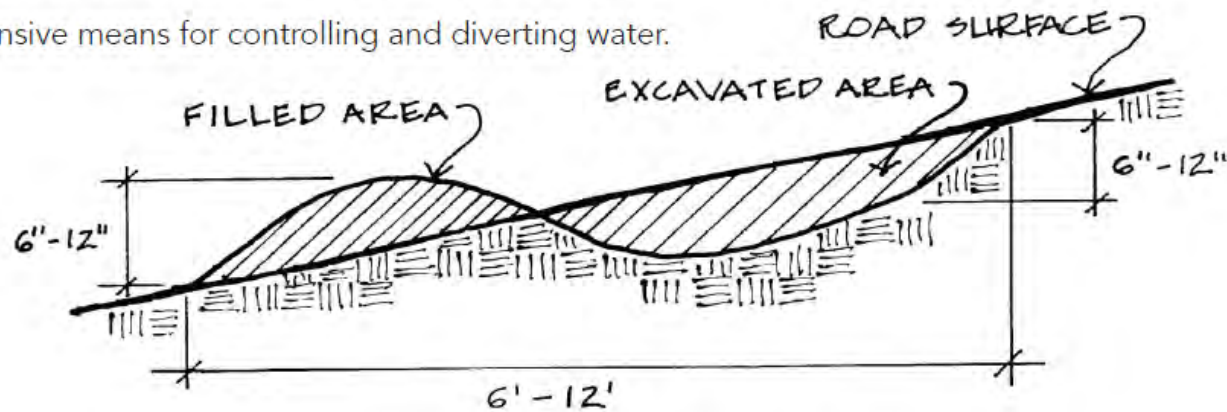
- More permanent than most other types of controls.
- Can be easily expanded if necessary.
- The smaller the stone size, the more sediment that is removed.
- Easy installation.
- Must be lined with fabric to prevent scouring.



Waterbar

Berm or open culvert constructed across a road or driveway used to divert water flowing down the road.

- Use only on very low traffic volume, steep gravel roads.
- Prevents gullies and road washouts.
- Eliminates concentrated sediment deposits.
- Construct low enough for traffic to pass over and angle at approximately 30° across road (not perpendicular).
- Spacing of waterbars is dependent upon road slope.
- Need to be maintained and/or rebuilt periodically.
- Inexpensive means for controlling and diverting water.



WATERBAR CROSS-SECTION













Thank You! Questions?

Corrie Miller

Friends of the Mad River

friends@madriver.com, (802) 496-9127

Richard Czaplinski

Margo Wade